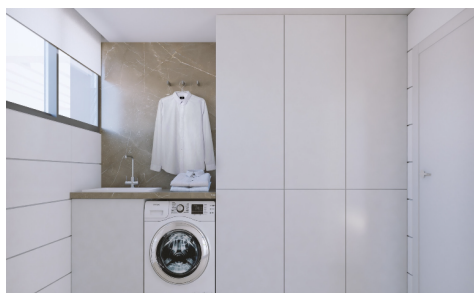


EME9789D



## Villa in Banos y Mendigo

€1,285,000



SÓTANO

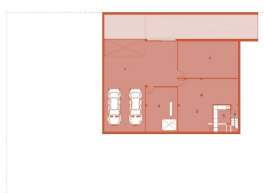
-1

### CARACTERÍSTICAS

REFERENCIA	ÁREA
1. GARAJE	10,00 m²
2. COCINA	10,00 m²
3. COMEDOR	10,00 m²
4. SALÓN	10,00 m²
5. DORMITORIO	10,00 m²
6. BAÑO	10,00 m²
7. TERRAZA	10,00 m²
8. TOTAL SÓTANO	10,00 m²

ESD/2018

OLIMPO



PRIMERA PLANTA

1

### CARACTERÍSTICAS

REFERENCIA	ÁREA
1. GARAJE	10,00 m²
2. COCINA	10,00 m²
3. COMEDOR	10,00 m²
4. SALÓN	10,00 m²
5. DORMITORIO	10,00 m²
6. BAÑO	10,00 m²
7. TERRAZA	10,00 m²
8. TOTAL PRIMERA PLANTA	10,00 m²

ESD/2018

OLIMPO



5



6



283m²



1,000m²



These superb high end luxury villas are located in one of the closest resorts to Murcia city called Altaona Golf and Country Village. The 336m² property is seated on a plot size of 1000m² and is designed over two floors plus a very large basement. Top quality materials have been used throughout the build and both the indoor and outdoor spaces have a fresh, light finish with clean lines, i...(Ask for More Details!)

# PLANTA BAJA

OLIMPO

0

## CARACTERÍSTICAS

1. HALL	22,89 m <sup>2</sup>
2. COCINA	19,40 m <sup>2</sup>
3. DORMITORIO 1	12,80 m <sup>2</sup>
4. SALÓN-COMEDOR	59,07 m <sup>2</sup>
5. BAÑO 1	5,46 m <sup>2</sup>
6. ALCOZ	3,53 m <sup>2</sup>
7. PORCHA	24,34 m <sup>2</sup>
8. PISCINA	26,79 m <sup>2</sup>
9. TERRAZA CUBIERTA	104,10 m <sup>2</sup>
TOTAL PLANTA BAJA	282,47 m <sup>2</sup>

